



HUGHES: A MULTI-USE PARK & OPEN SPACE INCLUDING A BIKE PARK!

THE COMMUNITY BROADLY SUPPORTS A MULTI-USE HUGHES



Kevin Krause

*Fort Collins Bike Park Collective,
Ciclismo Youth Foundation, Wolfpack*

Kenny Bearden

Overland Mountain Bike Association

Nadiya Mitelman-Frey

*Former PATHS member, 2021 ballot
measure organizer & petitioner*

Joanna Fetherolf

*Overland Mountain Bike Association,
Wolfpack*

*We voted YES on Hughes Public Open Lands and supported the effort based on the uses in the ballot language: **parks, recreation, and conservation.***

- We represent families, local nonprofits, and tens of thousands who value outdoor recreation & bike culture in Fort Collins, a nationally recognized bike community
- Over 35,000 adult county residents are mountain bikers
 - Does not include vast youth riding bikes, or those who BMX, road, cyclocross, or ride around town

A MULTI-USE VISION SHOWCASES THE VALUES OF FORT COLLINS

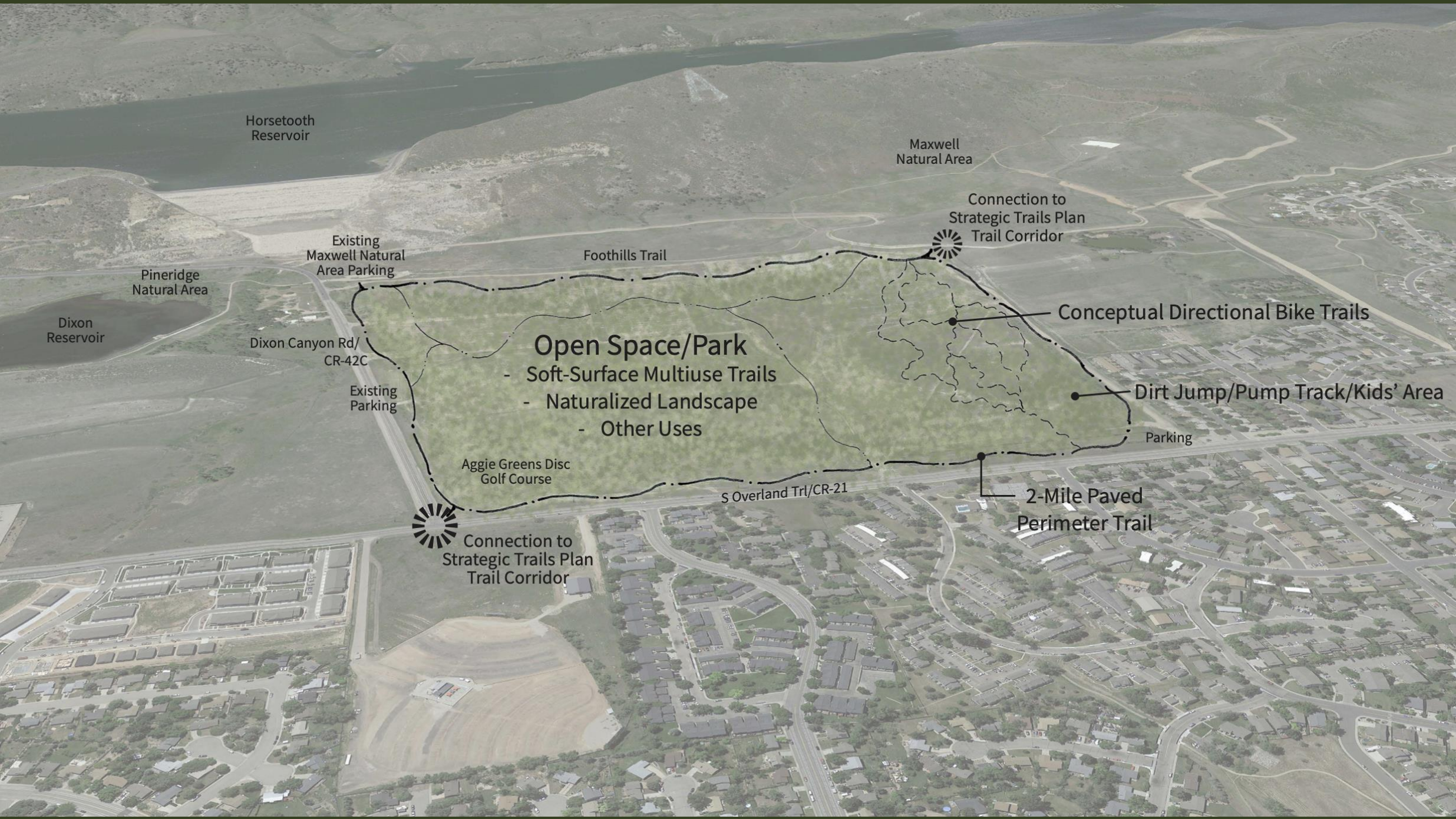


- **A naturalized setting that offers the community an inclusive, multi-use space for all**
 - Walking, running & rolling; disc golf; sledding; parks & open space; picnic areas
 - A learning environment: interpretive & educational exhibits with site history, ecological value of the area
- **A bike park is a key part of this vision**
 - Longstanding high-level of community support
 - Primarily trail-based, and include pump tracks, tot tracks/kid-friendly features, dirt jumps and more
 - More info within City of FC Bike Park Feasibility Study
 - Ideal site terrain character with sloping topography
- **Highly accessible for all members of the community**
 - Connected to the low stress bicycle network & existing soft-surface trails
 - Adjacent to planned West Elizabeth Transit extension

A BIKE PARK AT HUGHES BENEFITS FORT COLLINS



- **A bike park would not have negative environmental impacts**
 - Categorized as a low impact use in other communities
 - Daytime hours only with no lighting
 - Coexistence of park & natural areas like many others around the city
 - Historically a heavily impacted & developed site
- **A bike park does not only serve a limited population**
 - Similar bike parks see use from all ages & abilities + all types of equipment
 - The community voice has been heard loud & clear; this serves a large population, *including thousands of youth who are too young to vote*
- **A bike park would not take up a large section of the property**
 - The footprint would be minimal, allowing space for all other community uses



Horsetooth
Reservoir

Maxwell
Natural Area

Connection to
Strategic Trails Plan
Trail Corridor

Pineridge
Natural Area

Foothills Trail

Existing
Maxwell Natural
Area Parking

Conceptual Directional Bike Trails

Dixon
Reservoir

Dixon Canyon Rd/
CR-42C

Open Space/Park

- Soft-Surface Multiuse Trails
- Naturalized Landscape
- Other Uses

Existing
Parking

Dirt Jump/Pump Track/Kids' Area

Parking

Aggie Greens Disc
Golf Course

S Overland Trl/CR-21

2-Mile Paved
Perimeter Trail

Connection to
Strategic Trails Plan
Trail Corridor



THE COMMUNITY UNITED IN 2021 TO STOP THE HOUSING DEVELOPMENT, NOT ON ONE SPECIFIC USE FOR THE PROPERTY

- Original PATHS members were united only in preventing the housing development
- Each dedicated a significant portion of their lives to achieve that outcome but most didn't stay involved
- Majority of original PATHS members support uses within Public Open Lands definition: parks, recreation, and conservation
- Multi-use vision clearly fits within the spirit of ballot language supported by 69% of voters
- Consider if remaining members may be a small group of neighbors adjacent to Hughes

PLEASE, AND THANK YOU



Bike parks are highly valued amenities in communities throughout the country, yielding many positive benefits, and fit well in a multi-use space.

- *Please listen to the voices within the entire community*
- *Please support uses which benefit the greatest number of community members*
- *Please consider the motives for all groups*
- *Please allow our collective values to carry forward*

Review additional information at: www.focobikeparks.org