

# Sonoma County Emergency Management



Petaluma Fairgrounds Informational  
Advisory Committee

May 14, 2022

2017





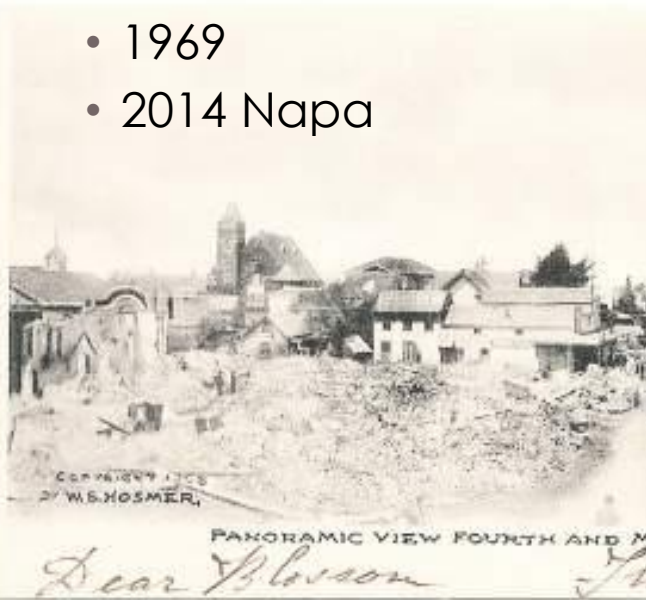
- Lead efforts to prepare for and respond to disasters
- Unincorporated County / Incorporated Cities & Districts
  - Hazard Assessment and Response Plans
  - Community Preparedness
  - Alert & Warning
  - Coordinate Response





# Earthquake History in Sonoma County

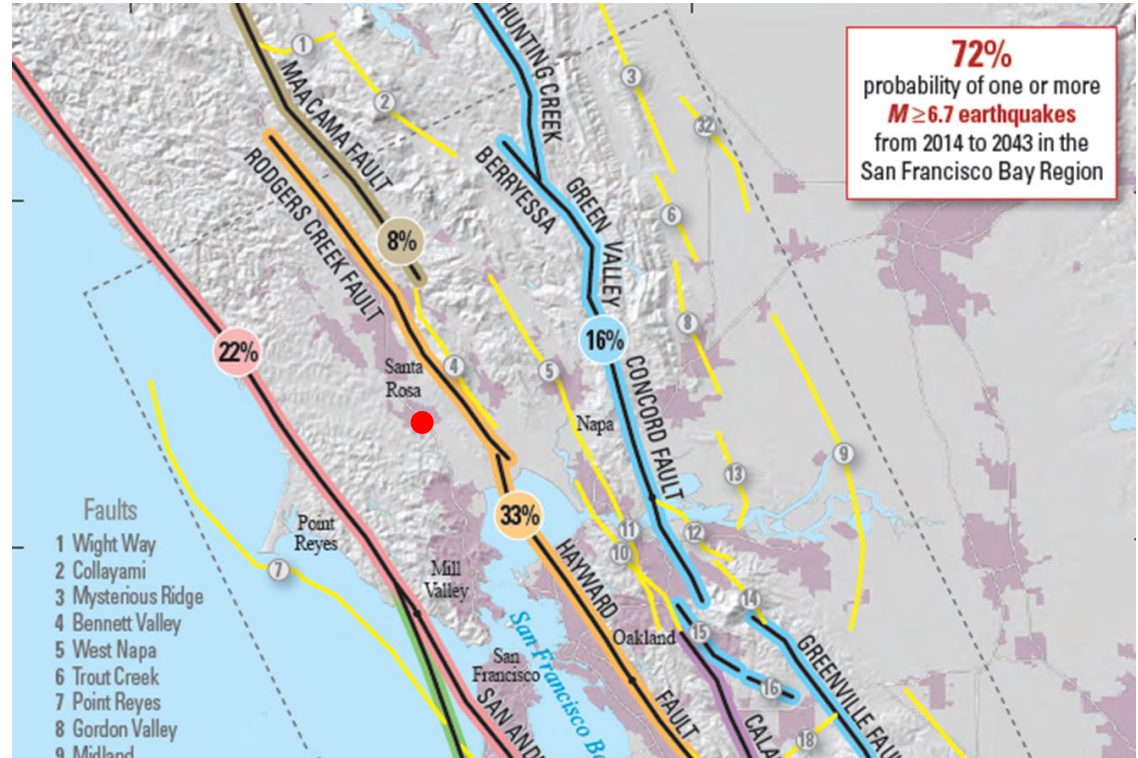
- 1898
- 1906
- 1969
- 2014 Napa



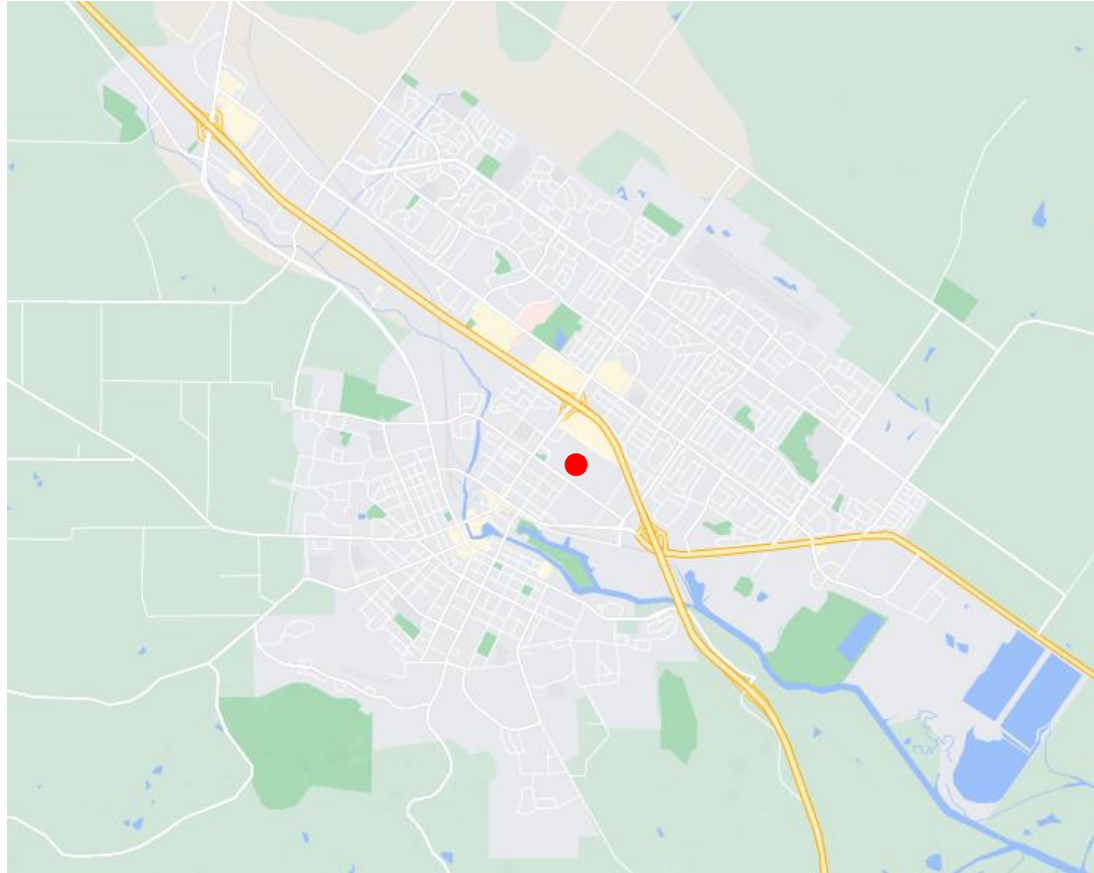
# Earthquake Probability

## Rodgers Creek Fault

- Highest probability
- Highest hazard



# Petaluma Fairgrounds



# Petaluma Fairgrounds

## Potential Disaster Response Functions

- Emergency Shelter
- Resource Staging
- Base Camp
- Logistics Point of Distribution
- Recovery Operations





# Petaluma Fairgrounds

## Potential Long-Term Functions

- Resilient City Public Safety Building
  - Emergency Operations Center (EOC)
  - Fire Station/Administration
  - Police Station/Administration
  - Communications
- Resilient Disaster Shelter
- Multi-purpose Flex Space





DEPARTMENT OF  
**EMERGENCY  
MANAGEMENT**  
SONOMA COUNTY

# Thank You

**Christopher Godley, CEM**

Director of Emergency Management

County of Sonoma

[christopher.godley@sonoma-county.org](mailto:christopher.godley@sonoma-county.org)

707-565-1152